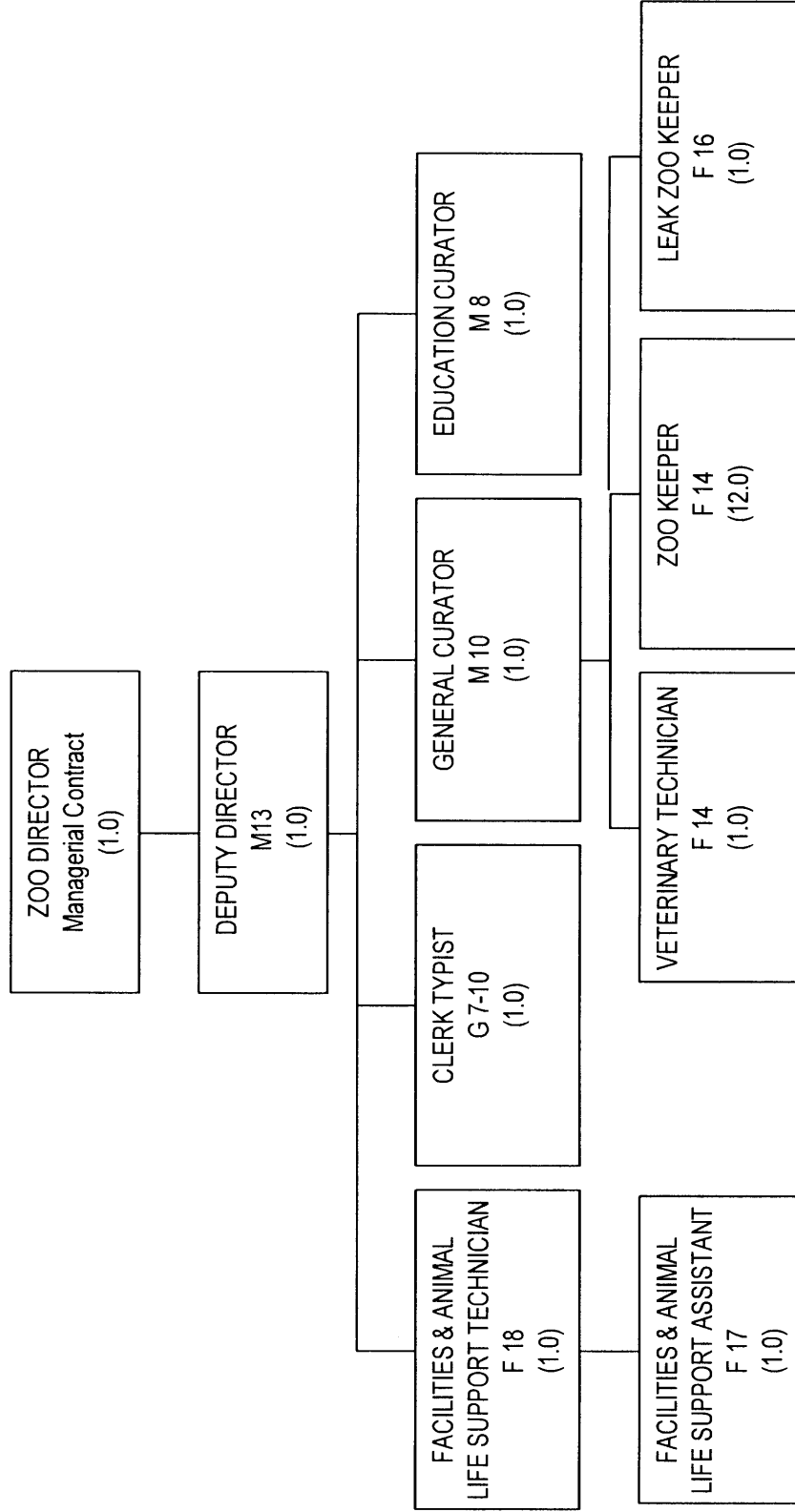


# DANE COUNTY HENRY VILAS ZOO



COUNTY OF DANE  
BUDGETED POSITIONS

2017  
REQUEST RECOMM'D ADOPTED

MOD  
2016

RANGE 2015 2016

CLASSIFICATION TITLE

DANE COUNTY HENRY VILAS ZOO

ZOO DIRECTOR	MC	1,000 74-01	1,000 74-01	1,000 74-01	1,000 74-01	1,000 74-01	1,000 74-01
DEPUTY ZOO DIRECTOR	M 13	1,000 74-02	1,000 74-02	1,000 74-02	1,000 74-02	1,000 74-02	1,000 74-02
GENERAL CURATOR	M 10	1,000	1,000	1,000	1,000	1,000	1,000
CONSERVATION EDUCATION CURATOR	M 08	1,000	1,000	1,000	1,000	1,000	1,000
FACILITIES & ANIMAL LIFE SUPPORT TECHNICIAN	F 18	1,000	1,000	1,000	1,000	1,000	1,000
FACILITIES & ANIMAL LIFE SUPPORT ASSISTANT	F 17	1,000 74-02	1,000 74-02	1,000 74-02	1,000 74-02	1,000 74-02	1,000 74-02
LEAD ZOO KEEPER	F 16	0,000	0,000	1,000	1,000	1,000	1,000
VETERINARY TECHNICIAN	F 14	1,000	1,000	1,000	1,000	1,000	1,000
ZOO KEEPER	F 14	1,000 74-02	1,000 74-02	1,000 74-02	1,000 74-02	1,000 74-02	1,000 74-02
ZOO KEEPER	F 14	11,000	12,000	11,000	11,000	11,000	11,000
CLERK TYPIST I-II	G 07-10	1,000	1,000	1,000	1,000	1,000	1,000
<b>DANE COUNTY HENRY VILAS ZOO TOTAL</b>		<b>20,000</b>	<b>21,000</b>	<b>21,000</b>	<b>21,000</b>	<b>21,000</b>	<b>21,000</b>

2

COUNTY OF DANE  
BUDGETED POSITIONS

**SUMMARY OF POSITION FOOTNOTES:**

DANE COUNTY HENRY VILAS ZOO

74-01 RES. 30, 2012-13, ADOPTED JUNE 21, 2012 AUTHORIZED FIVE-YEAR EMPLOYMENT CONTRACT ENDING JUNE 24, 2017.

74-02 POSITION FUNDED BY ZOOLOGICAL SOCIETY REVENUE.

74-03 2016 RECOMMENDED BUDGET CREATES 1.0 FTE ZOO KEEPER, CONTINGENT UPON RECEIPT OF SUFFICIENT FRIENDS OF THE ZOO REVENUE.

**Dept:** Dane County Henry Vilas Zoo **74** **DANE COUNTY** **Fund Name:** General Fund  
**Prgm:** Dane County Henry Vilas Zoo **000/00** **Fund No:** 1110

**Mission:** Join with other zoos to save and protect the wonders of the living natural world. Provide high quality educational and recreational experiences for over 725,000 visitors annually, giving them an opportunity to learn about and enjoy animals.

**Description:** The 30-acre zoo has over 725,000 visitors and provides conservation and education programs for 30,000 participants annually. The Zoo exhibits 600 animals representing 165 species. Open everyday of the year, Henry Vilas Zoo is one of 227 zoos that meet the high standards of accreditation by the Association of Zoos and Aquariums, it is one of a few accredited zoos that remains free.

	Actual 2015	Adopted 2016	2015 Carry Forward	Board Transfers	Budget As Modified	2016 YTD	Estimated 2016	Department Request
<b>PROGRAM EXPENDITURES</b>								
Personnel Costs	\$1,802,383	\$1,873,700	\$0	\$0	\$1,873,700	\$507,454	\$1,762,069	\$1,870,900
Operating Expenses	\$709,828	\$785,575	\$7,042	\$0	\$792,617	\$231,699	\$793,770	\$795,575
Contractual Services	\$201,261	\$249,225	\$0	\$0	\$249,225	\$53,611	\$256,437	\$247,525
Operating Capital	\$0	\$0	\$0	\$0	\$0	\$0	\$0	\$0
<b>TOTAL</b>	<b>\$2,713,473</b>	<b>\$2,908,500</b>	<b>\$7,042</b>	<b>\$0</b>	<b>\$2,915,542</b>	<b>\$792,765</b>	<b>\$2,812,276</b>	<b>\$2,914,000</b>
<b>PROGRAM REVENUE</b>								
Taxes	\$0	\$0	\$0	\$0	\$0	\$0	\$0	\$0
Intergovernmental Revenue	\$383,753	\$385,272	\$0	\$0	\$385,272	\$0	\$385,272	\$392,352
Licenses & Permits	\$0	\$0	\$0	\$0	\$0	\$0	\$0	\$0
Fines, Forfeits & Penalties	\$0	\$0	\$0	\$0	\$0	\$0	\$0	\$0
Public Charges for Services	\$745,624	\$871,000	\$0	\$0	\$871,000	\$0	\$871,000	\$871,000
Intergovernmental Charge for Services	\$0	\$0	\$0	\$0	\$0	\$0	\$0	\$0
Miscellaneous	\$49,081	\$81,240	\$0	\$0	\$81,240	\$3,843	\$12,000	\$81,240
Other Financing Sources	\$0	\$0	\$0	\$0	\$0	\$0	\$0	\$0
<b>TOTAL</b>	<b>\$1,178,459</b>	<b>\$1,337,512</b>	<b>\$0</b>	<b>\$0</b>	<b>\$1,337,512</b>	<b>\$3,843</b>	<b>\$1,268,272</b>	<b>\$1,344,592</b>
<b>GPR SUPPORT</b>	<b>\$1,535,014</b>	<b>\$1,570,988</b>			<b>\$1,578,030</b>			<b>\$1,569,408</b>
<b>F.T.E. STAFF</b>	<b>20,000</b>	<b>21,000</b>					<b>21,000</b>	<b>21,000</b>

Dept: Dane County Henry Vilas Zoo		74		Fund Name: General Fund			
Prgm: Dane County Henry Vilas Zoo		000/00		Fund No.: 1110			
DI#	2017 Base	Net Decision Items					2017 Requested Budget
		01	02	03	04	05	
<b>PROGRAM EXPENDITURES</b>							
Personnel Costs	\$1,870,900	\$0	\$0	\$0	\$0	\$0	\$1,870,900
Operating Expenses	\$785,575	\$0	\$0	\$0	\$0	\$0	\$785,575
Contractual Services	\$238,925	\$0	\$1,000	\$3,000	\$1,000	\$500	\$247,525
Operating Capital	\$0	\$0	\$0	\$0	\$0	\$0	\$0
<b>TOTAL</b>	<b>\$2,895,400</b>	<b>\$0</b>	<b>\$1,000</b>	<b>\$3,000</b>	<b>\$1,000</b>	<b>\$500</b>	<b>\$2,914,000</b>
<b>PROGRAM REVENUE</b>							
Taxes	\$0	\$0	\$0	\$0	\$0	\$0	\$0
Intergovernmental Revenue	\$385,272	\$3,360	\$200	\$600	\$200	\$100	\$392,352
Licenses & Permits	\$0	\$0	\$0	\$0	\$0	\$0	\$0
Fines, Forfeits & Penalties	\$0	\$0	\$0	\$0	\$0	\$0	\$0
Public Charges for Services	\$871,000	\$0	\$0	\$0	\$0	\$0	\$871,000
Intergovernmental Charge for Services	\$0	\$0	\$0	\$0	\$0	\$0	\$0
Miscellaneous	\$81,240	\$0	\$0	\$0	\$0	\$0	\$81,240
Other Financing Sources	\$0	\$0	\$0	\$0	\$0	\$0	\$0
<b>TOTAL</b>	<b>\$1,337,512</b>	<b>\$3,360</b>	<b>\$200</b>	<b>\$600</b>	<b>\$200</b>	<b>\$100</b>	<b>\$1,344,592</b>
<b>GPR SUPPORT</b>	<b>\$1,557,888</b>	<b>(\$3,360)</b>	<b>\$800</b>	<b>\$2,400</b>	<b>\$800</b>	<b>\$400</b>	<b>\$1,569,408</b>
<b>F.T.E. STAFF</b>	<b>21,000</b>	<b>0.000</b>	<b>0.000</b>	<b>0.000</b>	<b>0.000</b>	<b>0.000</b>	<b>21,000</b>

<b>NARRATIVE INFORMATION ABOUT DECISION ITEMS SHOWN ABOVE</b>			
	Expenditures	Revenue	GPR Support
<b>2017 BUDGET BASE</b>			
DI # ZOO-ZOO-1	\$2,895,400	\$1,337,512	\$1,557,888
DEPT Increase revenues for the City of Madison share of 2016 Zoo personnel cost increases.	\$0	\$3,360	(\$3,360)
EXEC			\$0
ADOPTED			\$0
<b>NET DI # ZOO-ZOO-1</b>	<b>\$0</b>	<b>\$3,360</b>	<b>(\$3,360)</b>

5

Dept: Dane County Henry Vilas Zoo 74		Fund Name: General Fund	
Prgm: Dane County Henry Vilas Zoo 000/00		Fund No.: 1110	
NARRATIVE INFORMATION ABOUT DECISION ITEMS SHOWN ON PREVIOUS PAGE			
DI #	ZOO-ZOO-2	Expenditures	Revenue
DEPT	Veterinarian Services Increase expenditures for veterinary services to match contracted amount annual increase. The Zoo has a contract veterinarian from Stoughton Veterinary Clinic who provides veterinary care for the entire collection of animals, with 24/7 coverage. The City of Madison share is 20% of the increased cost.	\$1,000	\$200
EXEC			\$800
ADOPTED			\$0
NET DI # ZOO-ZOO-2		\$1,000	\$200
DEPT	ZOO-ZOO-3 Waste and Recycling Removal Increase expenditures to reflect the correct amount of the contract for waste removal and recycling at the zoo in 2017 along with the addition of more waste containers due to opening of Arctic Passage. The City of Madison share is 20% of the increased cost. The Friends of the Zoo will reimburse the zoo for extra waste costs due to operations of Glacier Grille.	\$3,000	\$600
EXEC			\$2,400
ADOPTED			\$0
NET DI # ZOO-ZOO-3		\$3,000	\$600
DEPT	ZOO-ZOO-4 Security Services Increase expenditures in security services to reflect the hourly rate increase in the contract with JBM Security. The City of Madison share is 20% of the increased cost.	\$1,000	\$200
EXEC			\$800
ADOPTED			\$0
NET DI # ZOO-ZOO-4		\$1,000	\$200
			GPR Support

Dept: Dane County Henry Vilas Zoo		74	Fund Name: General Fund		
Prgm: Dane County Henry Vilas Zoo		000/00	Fund No.: 1110		
NARRATIVE INFORMATION ABOUT DECISION ITEMS SHOWN ON PREVIOUS PAGE					
DI #	ZOO-ZOO-5	Membership Costs	Expenditures	Revenue	GPR Support
DEPT		To maintain the highest standards for animal welfare and care, the Henry Vilas Zoo has an institutional membership in the Association of Zoos and Aquariums (AZA), The World Association of Zoos and Aquariums (WAZA), the internationally recognized gold standard of animal record database, Zoological Information Management System (ZIMS) and is a Silver Level Institutional member of the International	\$10,000	\$2,000	\$8,000
EXEC					\$0
ADOPTED					\$0
			\$10,000	\$2,000	\$8,000
DI #	ZOO-ZOO-6	Laundry POS			
DEPT		Increased expenditures to reflect the new amount for the current uniform contract for the keeper and maintenance staff. These staff members are provided uniforms for their daily work duties and the uniforms are also laundered and repaired through the contract with Aramark.	\$500	\$100	\$400
EXEC					\$0
ADOPTED					\$0
			\$500	\$100	\$400
DI #	ZOO-ZOO-7	Elevator Repairs and Maintenance			
DEPT		Increased expenditures to reflect the new contract amount for elevator maintenance with Schindler.	\$3,100	\$620	\$2,480
EXEC					\$0
ADOPTED					\$0
			\$3,100	\$620	\$2,480
			\$2,914,000	\$1,344,592	\$1,569,408
2017 REQUESTED BUDGET					

7

DEPARTMENT  
PROGRAM

Dane County Henry Vilas Zoo  
Dane County Henry Vilas Zoo

OPERATING BUDGET SUMMARY

PROGRAM SUMMARY	2015 ACTUAL	ADOPTED BUDGET 2016	2016 COUNTY BOARD ACTIONS		CURRENT MODIFIED BUDGET	ACTUAL YTD	ESTIMATED TOTAL	TOTAL ESTIMATED CARRYFORWD	AGENCY BASE
			2015 CARRYFORWD	2016					
PERSONNEL COSTS	\$1,802,383	\$1,873,700	\$0	\$0	\$1,873,700	\$507,454	\$1,762,069	\$0	\$1,870,900
OPERATING EXPENSE	\$709,828	\$785,575	\$7,042	\$0	\$792,617	\$231,699	\$793,770	\$0	\$785,575
CONTRACTUAL SERVICES	\$201,261	\$249,225	\$0	\$0	\$249,225	\$53,611	\$256,437	\$0	\$238,925
OPERATING CAPITAL	\$0	\$0	\$0	\$0	\$0	\$0	\$0	\$0	\$0
TOTAL PROGRAM EXPENDITURES	\$2,713,473	\$2,908,500	\$7,042	\$0	\$2,915,542	\$792,765	\$2,812,276	\$0	\$2,895,400
LESS REVENUES									
TAXES	\$0	\$0	\$0	\$0	\$0	\$0	\$0	\$0	\$0
INTERGOVERNMENTAL REVENUE	\$383,753	\$385,272	\$0	\$0	\$385,272	\$0	\$385,272	\$0	\$385,272
LICENSES & PERMITS	\$0	\$0	\$0	\$0	\$0	\$0	\$0	\$0	\$0
FINES, FORFEITS & PENALTIES	\$0	\$0	\$0	\$0	\$0	\$0	\$0	\$0	\$0
PUBLIC CHARGE FOR SERVICE	\$745,624	\$871,000	\$0	\$0	\$871,000	\$0	\$871,000	\$0	\$871,000
INTERGOVL CHARGES FOR SERVICE	\$0	\$0	\$0	\$0	\$0	\$0	\$0	\$0	\$0
MISCELLANEOUS	\$49,081	\$81,240	\$0	\$0	\$81,240	\$3,843	\$12,000	\$0	\$81,240
OTHER FINANCING SOURCES	\$0	\$0	\$0	\$0	\$0	\$0	\$0	\$0	\$0
TOTAL PROGRAM REVENUES	\$1,178,459	\$1,337,512	\$7,042	\$0	\$1,337,512	\$3,843	\$1,288,272	\$0	\$1,337,512
NET COST	\$1,535,014	\$1,570,988	\$0	\$0	\$1,578,030	\$788,921	\$1,544,004	\$0	\$1,557,888

PROGRAM SUMMARY	AGENCY BASE	DECISION ITEM #1	DECISION ITEM #2	DECISION ITEM #3	DECISION ITEM #4	DECISION ITEM #5	DECISION ITEM #6	DECISION ITEM #7	AGENCY REQUEST
OPERATING EXPENSE	\$785,575	\$0	\$0	\$0	\$0	\$10,000	\$0	\$0	\$795,575
CONTRACTUAL SERVICES	\$238,925	\$0	\$1,000	\$3,000	\$1,000	\$0	\$500	\$3,100	\$247,525
OPERATING CAPITAL	\$0	\$0	\$0	\$0	\$0	\$0	\$0	\$0	\$0
TOTAL PROGRAM EXPENDITURES	\$2,895,400	\$0	\$1,000	\$3,000	\$1,000	\$10,000	\$500	\$3,100	\$2,914,000
LESS REVENUES									
TAXES	\$0	\$0	\$0	\$0	\$0	\$0	\$0	\$0	\$0
INTERGOVERNMENTAL REVENUE	\$385,272	\$3,360	\$200	\$600	\$200	\$2,000	\$100	\$620	\$392,352
LICENSES & PERMITS	\$0	\$0	\$0	\$0	\$0	\$0	\$0	\$0	\$0
FINES, FORFEITS & PENALTIES	\$0	\$0	\$0	\$0	\$0	\$0	\$0	\$0	\$0
PUBLIC CHARGE FOR SERVICE	\$871,000	\$0	\$0	\$0	\$0	\$0	\$0	\$0	\$871,000
INTERGOVL CHARGES FOR SERVICE	\$0	\$0	\$0	\$0	\$0	\$0	\$0	\$0	\$0
MISCELLANEOUS	\$81,240	\$0	\$0	\$0	\$0	\$0	\$0	\$0	\$81,240
OTHER FINANCING SOURCES	\$0	\$0	\$0	\$0	\$0	\$0	\$0	\$0	\$0
TOTAL PROGRAM REVENUES	\$1,337,512	\$3,360	\$200	\$600	\$200	\$2,000	\$100	\$620	\$1,344,592
NET COST	\$1,557,888	(\$3,360)	\$800	\$2,400	\$800	\$8,000	\$400	\$2,480	\$1,569,408

8



DEPARTMENT Dane County Henry Vilas Zoo  
PROGRAM: Dane County Henry Vilas Zoo

YR	ORG CODE	OBJECT	DESCRIPTION	2015		2016		2015		2016		CURRENT MODIFIED BUDGET	ACTUAL EXPENDITURES YTD	ESTIMATED EXPENDITURES TOTAL	TOTAL ESTIMATED CARRYFORWARD	AGENCY BASE
				BUDGET	EXPENDITURES	BUDGET	EXPENDITURES	CARRYFORWARD	ACTIONS							
17	ZOO	10009	SALARIES AND WAGES	\$1,132,468	\$1,276,400	\$0	\$0	\$1,276,400	\$0	\$0	\$1,276,400	\$340,425	\$1,196,121	\$0	\$1,274,200	
17	ZOO	10027	OVERTIME	\$76,398	\$16,700	\$0	\$0	\$16,700	\$0	\$0	\$16,700	\$2,337	\$18,767	\$0	\$16,700	
17	ZOO	10072	LIMITED TERM EMPLOYEES	\$56,615	\$26,700	\$0	\$0	\$26,700	\$0	\$0	\$26,700	\$0	\$26,700	\$0	\$26,700	
17	ZOO	10099	RETIREMENT FUND	\$98,400	\$101,000	\$0	\$0	\$101,000	\$0	\$0	\$101,000	\$26,699	\$94,753	\$0	\$100,800	
17	ZOO	10108	SOCIAL SECURITY	\$96,798	\$101,100	\$0	\$0	\$101,100	\$0	\$0	\$101,100	\$26,076	\$94,883	\$0	\$101,000	
17	ZOO	10117	HEALTH	\$247,629	\$292,000	\$0	\$0	\$292,000	\$0	\$0	\$292,000	\$81,417	\$252,190	\$0	\$292,400	
17	ZOO	10126	HEALTH-RETIRES	\$21,205	\$22,700	\$0	\$0	\$22,700	\$0	\$0	\$22,700	\$21,633	\$21,633	\$0	\$23,000	
17	ZOO	10153	DENTAL	\$20,662	\$25,900	\$0	\$0	\$25,900	\$0	\$0	\$25,900	\$4,962	\$20,796	\$0	\$24,300	
17	ZOO	10171	DISABILITY INSURANCE	\$1,917	\$1,700	\$0	\$0	\$1,700	\$0	\$0	\$1,700	\$691	\$2,057	\$0	\$2,000	
17	ZOO	10180	LIFE INSURANCE	\$325	\$400	\$0	\$0	\$400	\$0	\$0	\$400	\$81	\$339	\$0	\$400	
17	ZOO	10185	FSA ADMINISTRATION FEE	\$139	\$100	\$0	\$0	\$100	\$0	\$0	\$100	\$0	\$100	\$0	\$100	
17	ZOO	10189	WORKERS COMPENSATION	\$28,400	\$32,400	\$0	\$0	\$32,400	\$0	\$0	\$32,400	\$0	\$32,400	\$0	\$33,200	
17	ZOO	10198	UNEMPLOYMENT COMPENSATION	\$0	\$0	\$0	\$0	\$0	\$0	\$0	\$0	\$1,805	\$0	\$0	\$0	
17	ZOO	10207	PROTECTIVE WEAR	\$1,425	\$0	\$0	\$0	\$0	\$0	\$0	\$1,500	\$1,330	\$1,330	\$0	\$0	
17	ZOO	10250	SALARY SAVINGS	\$0	(\$24,900)	\$0	\$0	(\$24,900)	\$0	\$0	(\$24,900)	\$0	\$0	\$0	\$1,600	
17	ZOO	20459	BLDG & GROUNDS REPAIRS & MAINT	\$87,851	\$73,700	\$0	\$0	\$73,700	\$7,042	\$0	\$90,742	\$26,104	\$90,000	\$0	(\$25,500)	
17	ZOO	20990	EXPENDABLE SUPPLIES	\$37,648	\$29,575	\$0	\$0	\$29,575	\$0	\$0	\$29,575	\$5,817	\$38,000	\$0	\$73,700	
17	ZOO	21413	LIBRARY	\$0	\$400	\$0	\$0	\$400	\$0	\$0	\$400	\$0	\$400	\$0	\$29,575	
17	ZOO	21575	MEDICATIONS	\$30,673	\$25,000	\$0	\$0	\$25,000	\$0	\$0	\$25,000	\$6,330	\$33,000	\$0	\$400	
17	ZOO	21584	MEMBERSHIP FEES	\$16,335	\$9,100	\$0	\$0	\$9,100	\$0	\$0	\$9,100	\$17,517	\$17,342	\$0	\$25,000	
17	ZOO	22043	PRTRNG STA & OFFICE SUPPLIES	\$3,159	\$4,600	\$0	\$0	\$4,600	\$0	\$0	\$4,600	\$1,498	\$3,960	\$0	\$9,100	
17	ZOO	22646	TRAVEL EXPENSE	\$0	\$400	\$0	\$0	\$400	\$0	\$0	\$400	\$0	\$400	\$0	\$4,600	
17	ZOO	22736	TELEPHONE	\$5,263	\$4,900	\$0	\$0	\$4,900	\$0	\$0	\$4,900	\$0	\$400	\$0	\$400	
17	ZOO	22740	UTILITIES	\$345,325	\$444,400	\$0	\$0	\$444,400	\$0	\$0	\$444,400	\$111,093	\$5,409	\$0	\$4,900	
17	ZOO	22870	ZOO ANIMALS FOOD-DRUGS-VITAMIN	\$183,575	\$193,500	\$0	\$0	\$193,500	\$0	\$0	\$193,500	\$61,654	\$400,000	\$0	\$444,400	
17	ZOO	31260	INSURANCE	\$19,300	\$37,400	\$0	\$0	\$37,400	\$0	\$0	\$37,400	\$0	\$205,259	\$0	\$193,500	
17	ZOO	31386	LAUNDRY POS	\$4,375	\$5,500	\$0	\$0	\$5,500	\$0	\$0	\$5,500	\$1,421	\$37,400	\$0	\$27,100	
17	ZOO	31875	PEST CONTROL - POS	\$4,008	\$3,600	\$0	\$0	\$3,600	\$0	\$0	\$3,600	\$1,002	\$4,260	\$0	\$5,500	
17	ZOO	32133	PURCHASE OF TRADE SERVICES	\$0	\$19,525	\$0	\$0	\$19,525	\$0	\$0	\$19,525	\$0	\$10,000	\$0	\$3,600	
17	ZOO	32223	RENTAL OF EQUIPMENT	\$1,290	\$100	\$0	\$0	\$100	\$0	\$0	\$100	\$248	\$10,000	\$0	\$19,525	
17	ZOO	32323	SECURITY SERVICES-POS	\$81,280	\$83,500	\$0	\$0	\$83,500	\$0	\$0	\$83,500	\$21,335	\$88,009	\$0	\$100	
17	ZOO	32764	VETERINARIAN-POS	\$26,455	\$40,800	\$0	\$0	\$40,800	\$0	\$0	\$40,800	\$5,551	\$41,000	\$0	\$83,500	
17	ZOO	32781	WASTE REMOVAL	\$64,554	\$58,800	\$0	\$0	\$58,800	\$0	\$0	\$58,800	\$24,053	\$70,744	\$0	\$40,800	
17	ZOO	30945	ELEVATOR REPAIRS	\$0	\$0	\$0	\$0	\$0	\$0	\$0	\$0	\$0	\$0	\$0	\$58,800	
17	ZOO		TOTAL EXPENDITURES	\$2,713,473	\$2,908,500	\$0	\$0	\$2,908,500	\$7,042	\$0	\$2,915,542	\$792,765	\$2,812,276	\$0	\$2,895,400	

9

DEPARTMENT Dane County Vilas Zoo  
PROGRAM: Dane County Henry Vilas Zoo

YR	ORG CODE	OBJECT	DESCRIPTION	AGENCY BASE	DECISION ITEM #1	DECISION ITEM #2	DECISION ITEM #3	DECISION ITEM #4	DECISION ITEM #5	DECISION ITEM #6	DECISION ITEM #7	AGENCY REQUEST
17	ZOO	10009	SALARIES AND WAGES	\$1,274,200								\$1,274,200
17	ZOO	10027	OVERTIME	\$16,700								\$16,700
17	ZOO	10072	LIMITED TERM EMPLOYEES	\$26,700								\$26,700
17	ZOO	10099	RETIREMENT FUND	\$100,800								\$100,800
17	ZOO	10108	SOCIAL SECURITY	\$101,000								\$101,000
17	ZOO	10117	HEALTH	\$292,400								\$292,400
17	ZOO	10126	HEALTH-RETIRES	\$23,000								\$23,000
17	ZOO	10153	DENTAL	\$24,300								\$24,300
17	ZOO	10171	DISABILITY INSURANCE	\$2,000								\$2,000
17	ZOO	10180	LIFE INSURANCE	\$400								\$400
17	ZOO	10185	FSA ADMINISTRATION FEE	\$100								\$100
17	ZOO	10189	WORKERS COMPENSATION	\$33,200								\$33,200
17	ZOO	10198	UNEMPLOYMENT COMPENSATION	\$0								\$0
17	ZOO	10207	PROTECTIVE WEAR	\$1,600								\$1,600
17	ZOO	10250	SALARY SAVINGS	(\$25,500)								(\$25,500)
17	ZOO	20459	BLDG & GROUNDS REPAIRS & MAINT	\$73,700								\$73,700
17	ZOO	20990	EXPENDABLE SUPPLIES	\$29,575								\$29,575
17	ZOO	21413	LIBRARY	\$400								\$400
17	ZOO	21575	MEDICATIONS	\$25,000								\$25,000
17	ZOO	21584	MEMBERSHIP FEES	\$9,100					\$10,000			\$19,100
17	ZOO	22043	PRING STA & OFFICE SUPPLIES	\$4,600								\$4,600
17	ZOO	22646	TRAVEL EXPENSE	\$400								\$400
17	ZOO	22736	TELEPHONE	\$4,900								\$4,900
17	ZOO	22740	UTILITIES	\$444,400								\$444,400
17	ZOO	22870	ZOO ANIMALS FOOD-DRUGS-VITAMIN	\$193,500								\$193,500
17	ZOO	31260	INSURANCE	\$27,100								\$27,100
17	ZOO	31386	LAUNDRY POS	\$5,500						\$500		\$6,000
17	ZOO	31875	PEST CONTROL - POS	\$3,600								\$3,600
17	ZOO	32133	PURCHASE OF TRADE SERVICES	\$19,525								\$19,525
17	ZOO	32223	RENTAL OF EQUIPMENT	\$100								\$100
17	ZOO	32323	SECURITY SERVICES-POS	\$83,500				\$1,000				\$84,500
17	ZOO	32764	VETERINARIAN-POS	\$40,800								\$40,800
17	ZOO	32781	WASTE REMOVAL	\$58,800								\$58,800
17	ZOO	30945	ELEVATOR REPAIRS	\$0								\$0
TOTAL EXPENDITURES				\$2,895,400	\$0	\$1,000	\$3,000	\$1,000	\$10,000	\$500	\$3,100	\$2,914,000

DEPARTMENT Dane County Henry Vilas Zoo  
 PROGRAM: Dane County Henry Vilas Zoo

YR	ORG CODE	OBJECT	DESCRIPTION	2015 REVENUES	ADOPTED BUDGET 2016	2015 CARRYFORWARD	2016 COUNTY BOARD ACTIONS	CURRENT MODIFIED BUDGET	ACTUAL REVENUES YTD	ESTIMATED REVENUES TOTAL	TOTAL ESTIMATED CARRYFORWARD	AGENCY BASE
C												
A												
P												
B												
D												
17	ZOO	82970	MISCELLANEOUS GENERAL REVENUE	\$49,081	\$81,240	\$0	\$0	\$81,240	\$3,843	\$12,000	\$0	\$81,240
17	ZOO	84290	CITY OF MADISON ZOO CONTRACT	\$383,753	\$385,272	\$0	\$0	\$385,272	\$0	\$385,272	\$0	\$385,272
17	ZOO	84323	ZOOLOGICAL-EVENT OVERTIME REIMB	\$2,406	\$3,000	\$0	\$0	\$3,000	\$0	\$3,000	\$0	\$3,000
17	ZOO	84325	ZOOLOGICAL SOCIETY REVENUE	\$716,219	\$841,000	\$0	\$0	\$841,000	\$0	\$841,000	\$0	\$841,000
17	ZOO	84374	CONSERVATION EDUCATION REV	\$27,000	\$27,000	\$0	\$0	\$27,000	\$0	\$27,000	\$0	\$27,000
			TOTAL REVENUES	\$1,178,459	\$1,337,512	\$0	\$0	\$1,337,512	\$3,843	\$1,268,272	\$0	\$1,337,512

11

DEPARTMENT Dane County Henry Vilas Zoo  
 PROGRAM: Dane County Henry Vilas Zoo

YR	ORG CODE	OBJECT	DESCRIPTION	AGENCY BASE	DECISION ITEM #1	DECISION ITEM #2	DECISION ITEM #3	DECISION ITEM #4	DECISION ITEM #5	DECISION ITEM #6	DECISION ITEM #7	AGENCY REQUEST
17	ZOO	82970	MISCELLANEOUS GENERAL REVENUE	\$81,240								\$81,240
17	ZOO	84290	CITY OF MADISON ZOO CONTRACT	\$385,272	\$3,360	\$200	\$600	\$200	\$2,000	\$100	\$620	\$392,352
17	ZOO	84323	ZOOLOGICAL-EVENT OVERTIME REIMB	\$3,000								\$3,000
17	ZOO	84325	ZOOLOGICAL SOCIETY REVENUE	\$841,000								\$841,000
17	ZOO	84374	CONSERVATION EDUCATION REV	\$27,000								\$27,000
			TOTAL REVENUES	\$1,337,512	\$3,360	\$200	\$600	\$200	\$2,000	\$100	\$620	\$1,344,592

12

# DANE COUNTY BUDGET DECISION ITEM REQUEST

<b>1. DEPARTMENT</b> Dane County Henry Vilas Zoo	<b>3. DEPT. NO.</b> 74	<b>5. FUND NAME</b> General Fund	
<b>2. PROGRAM</b> Dane County Henry Vilas Zoo	<b>4. PROGRAM NO.</b> 000/00	<b>6. FUND NO.</b> 1110	
<b>7. DECISION ITEM TITLE</b>			
Cost to Continue Contribution - City of Madison			
<b>9. DECISION ITEM NUMBER</b>			
ZOO-ZOO-1			
<b>10. SHORT DESCRIPTION (for budget document--may not exceed 470 characters)</b>			
Increase revenues for the City of Madison share of 2016 Zoo personnel cost increases.			
<b>11. (a) EXPLANATION/JUSTIFICATION (please be specific)</b>			
City of Madison revenue is increased to reflect the City's obligation to fund 20% of the Zoo's net operating cost.			
<b>(b) What are the consequences of not funding this request?</b>			
Revenue for the Zoo will be under budgeted.			
<b>(c) What savings/productivity improvements will result from approval of this request?</b>			
<b>TOTAL REQUESTED FTE CHANGE</b> 0.000			
<b>12. OPERATING EXPENSES / REVENUE SUMMARY</b>			
<b>REQUESTED EXPENDITURES</b>			
PERSONNEL COSTS			\$0
OPERATING EXPENSE			\$0
CONTRACTUAL EXPENSE			\$0
OPERATING OUTLAY			\$0
TOTAL EXPENSE			\$0
<b>RELATED REVENUES</b>			
TAXES			\$0
INTERGOVERNMENTAL REVENUE			\$3,360
LICENSES & PERMITS			\$0
FINES, FORFEITS & PENALTIES			\$0
PUBLIC CHARGES FOR SERVICE			\$0
INTERGOVERNMENTAL CHARGE FOR SERVICES			\$0
MISCELLANEOUS			\$0
OTHER FINANCING SOURCES			\$0
TOTAL REVENUE			\$3,360
<b>NET COST TO COUNTY</b>			<b>(\$3,360)</b>

13

# DANE COUNTY BUDGET DECISION ITEM REQUEST

1. DEPARTMENT Dane County Henry Vilas Zoo	3. DEPT. NO. 74	5. FUND NAME General Fund	
2. PROGRAM Dane County Henry Vilas Zoo	4. PROGRAM NO. 0000/00	6. FUND NO. 1110	
7. DECISION ITEM TITLE Veterinarian Services			
9. DECISION ITEM NUMBER ZOO-ZOO-2			
10. SHORT DESCRIPTION (for budget document--may not exceed 470 characters) Increase expenditures for veterinary services to match contracted amount annual increase. The Zoo has a contract veterinarian from Stoughton Veterinary Clinic who provides veterinary care for the entire collection of animals, with 24/7 coverage. The City of Madison share is 20% of the increased cost.			
11. (a) EXPLANATION/JUSTIFICATION (please be specific) This increase will reflect the correct amount of the contract increase for veterinary services at the zoo in 2016.			
11. (b) What are the consequences of not funding this request? There will not be adequate funding in the veterinarian services line to meet the County's contractual obligation.			
11. (c) What savings/productivity improvements will result from approval of this request?			

<b>TOTAL REQUESTED FTE CHANGE</b>	0.000
-----------------------------------	-------

<b>12. OPERATING EXPENSES / REVENUE SUMMARY</b>	
<b>REQUESTED EXPENDITURES</b>	
PERSONNEL COSTS	\$0
OPERATING EXPENSE	\$0
CONTRACTUAL EXPENSE	\$1,000
OPERATING OUTLAY	\$0
<b>TOTAL EXPENSE</b>	<b>\$1,000</b>
<b>RELATED REVENUES</b>	
TAXES	\$0
INTERGOVERNMENTAL REVENUE	\$200
LICENSES & PERMITS	\$0
FINES, FORFEITS & PENALTIES	\$0
PUBLIC CHARGES FOR SERVICE	\$0
INTERGOVERNMENTAL CHARGE FOR SERVICES	\$0
MISCELLANEOUS	\$0
OTHER FINANCING SOURCES	\$0
<b>TOTAL REVENUE</b>	<b>\$200</b>
<b>NET COST TO COUNTY</b>	<b>\$800</b>

14

# DANE COUNTY BUDGET DECISION ITEM REQUEST

<b>1. DEPARTMENT</b> Dane County Henry Vilas Zoo	<b>3. DEPT. NO.</b> 74	<b>5. FUND NAME</b> General Fund	
<b>2. PROGRAM</b> Dane County Henry Vilas Zoo	<b>4. PROGRAM NO.</b> 0000/00	<b>6. FUND NO.</b> 1110	
<b>7. DECISION ITEM TITLE</b>			
Waste and Recycling Removal			
<b>9. DECISION ITEM NUMBER</b>			
ZOO-ZOO-3			
<b>10. SHORT DESCRIPTION (for budget document--may not exceed 470 characters)</b>			
Increase expenditures to reflect the correct amount of the contract for waste removal and recycling at the zoo in 2017 along with the addition of more waste containers due to opening of Arctic Passage. The City of Madison share is 20% of the increased cost. The Friends of the Zoo will reimburse the zoo for extra waste costs due to operations of Glacier Grille.			
<b>11. (a) EXPLANATION/JUSTIFICATION (please be specific)</b>			
This line item represents the Zoo's annual waste and recycling removal contract.			
<b>(b) What are the consequences of not funding this request?</b>			
There will not be adequate funding in the waste removal line to meet the County's contractual obligation.			
<b>(c) What savings/productivity improvements will result from approval of this request?</b>			
<b>TOTAL REQUESTED FTE CHANGE</b> 0.000			
<b>12. OPERATING EXPENSES / REVENUE SUMMARY</b>			
<b>REQUESTED EXPENDITURES</b>			
PERSONNEL COSTS			\$0
OPERATING EXPENSE			\$0
CONTRACTUAL EXPENSE			\$3,000
OPERATING OUTLAY			\$0
<b>TOTAL EXPENSE</b>			<b>\$3,000</b>
<b>RELATED REVENUES</b>			
TAXES			\$0
INTERGOVERNMENTAL REVENUE			\$600
LICENSES & PERMITS			\$0
FINES, FORFEITS & PENALTIES			\$0
PUBLIC CHARGES FOR SERVICE			\$0
INTERGOVERNMENTAL CHARGE FOR SERVICES			\$0
MISCELLANEOUS			\$0
OTHER FINANCING SOURCES			\$0
<b>TOTAL REVENUE</b>			<b>\$600</b>
<b>NET COST TO COUNTY</b>			<b>\$2,400</b>

15

# DANE COUNTY BUDGET DECISION ITEM REQUEST

<b>1. DEPARTMENT</b> Dane County Henry Vilas Zoo	<b>3. DEPT. NO.</b> 74	<b>5. FUND NAME</b> General Fund	<b>6. FUND NO.</b> 1110
<b>2. PROGRAM</b> Dane County Henry Vilas Zoo	<b>4. PROGRAM NO.</b> 000/00	<b>8. BUDGETED POSITION CHANGES</b>	
<b>7. DECISION ITEM TITLE</b> Security Services	<b>POSITION#</b>	<b>TITLE</b>	<b># FTE</b>   <b>START DATE</b>
<b>9. DECISION ITEM NUMBER</b> ZOO-ZOO-4			
<b>10. SHORT DESCRIPTION (for budget document--may not exceed 470 characters)</b> Increase expenditures in security services to reflect the hourly rate increase in the contract with JBM Security. The City of Madison share is 20% of the increased cost.			
<b>11. (a) EXPLANATION/JUSTIFICATION (please be specific)</b> The Zoo contracts security services from 5:00pm until 8:00am on normal operating days, with additional security during holidays when the staff is off.			
<b>(b) What are the consequences of not funding this request?</b> There will not be adequate funding in the security line to meet the County's contractual obligation.			
<b>(c) What savings/productivity improvements will result from approval of this request?</b>			
<b>TOTAL REQUESTED FTE CHANGE</b>   0.000			
<b>12. OPERATING EXPENSES / REVENUE SUMMARY</b>			
<b>REQUESTED EXPENDITURES</b>			
PERSONNEL COSTS   \$0			
OPERATING EXPENSE   \$0			
CONTRACTUAL EXPENSE   \$1,000			
OPERATING OUTLAY   \$0			
<b>TOTAL EXPENSE</b>   \$1,000			
<b>RELATED REVENUES</b>			
TAXES   \$0			
INTERGOVERNMENTAL REVENUE   \$200			
LICENSES & PERMITS   \$0			
FINES, FORFEITS & PENALTIES   \$0			
PUBLIC CHARGES FOR SERVICE   \$0			
INTERGOVERNMENTAL CHARGE FOR SERVICES   \$0			
MISCELLANEOUS   \$0			
OTHER FINANCING SOURCES   \$0			
<b>TOTAL REVENUE</b>   \$200			
<b>NET COST TO COUNTY</b>   \$800			



# DANE COUNTY BUDGET DECISION ITEM REQUEST

<b>1. DEPARTMENT</b> Dane County Henry Vilas Zoo	<b>3. DEPT. NO.</b> 74	<b>5. FUND NAME</b> General Fund	
<b>2. PROGRAM</b> Dane County Henry Vilas Zoo	<b>4. PROGRAM NO.</b> 0000/00	<b>6. FUND NO.</b> 1110	
<b>7. DECISION ITEM TITLE</b> Membership Costs	<b>8. BUDGETED POSITION CHANGES</b>		
<b>9. DECISION ITEM NUMBER</b> ZOO-ZOO-5	POSITION#	# FTE	START DATE
<b>10. SHORT DESCRIPTION (for budget document--may not exceed 470 characters)</b> To maintain the highest standards for animal welfare and care, the Henry Vilas Zoo has an institutional membership in the Association of Zoos and Aquariums (AZA). The World Association of Zoos and Aquariums (WAZA), the internationally recognized gold standard of animal record database, Zoological Information Management System (ZIMS) and is a Silver Level Institutional member of the International Rhino Keepers Association (IRKA).			
<b>11. (a) EXPLANATION/JUSTIFICATION (please be specific)</b> These above institutional memberships provide Henry Vilas Zoo with the most up to date and modern standards access for ensuring our animals receive the best possible care. This membership line has been underfunded for over five years and needs to be adjusted to the actual cost of these industry standard memberships. WAZA and AZA are widely recognized as the world leaders in animal care in zoos and aquariums and less than 10% of zoos in North America meet or exceed AZA animal standards. ZIMS is an animal record system database that allows our institution to access the most up to date and advanced information in regards to care and welfare. Henry Vilas Zoo has long been recognized as a leader in white rhino management in zoos and is working with the Rhino SSP and members of the IRKA to acquire a new white rhino in the near future.	<b>TOTAL REQUESTED FTE CHANGE</b> 0.000		
<b>(b) What are the consequences of not funding this request?</b> These memberships are considered essential to have the most up to date information and support to maintain the highest animal care standards at Henry Vilas Zoo ensuring it is within the top 10% of zoological institutions in the country. Not funding these memberships could lead to a loss of accreditation, which leads to removal of most if not all of our endangered species such as orangutans, polar bears, lions and so on. Being a member of these organizations ensures an ability to acquire, plan and replace charismatic endangered species and provide conservation support to them world wide.	<b>12. OPERATING EXPENSES / REVENUE SUMMARY</b>		
<b>(c) What savings/productivity improvements will result from approval of this request?</b>	<b>REQUESTED EXPENDITURES</b>		
	PERSONNEL COSTS	\$0	
	OPERATING EXPENSE	\$10,000	
	CONTRACTUAL EXPENSE	\$0	
	OPERATING OUTLAY	\$0	
	TOTAL EXPENSE	\$10,000	
	<b>RELATED REVENUES</b>		
	TAXES	\$0	
	INTERGOVERNMENTAL REVENU	\$2,000	
	LICENSES & PERMITS	\$0	
	FINES, FORFEITS & PENALTIES	\$0	
	PUBLIC CHARGES FOR SERVICE	\$0	
	INTERGOVERNMENTAL CHARGE FOR SERVICES	\$0	
	MISCELLANEOUS	\$0	
	OTHER FINANCING SOURCES	\$0	
	TOTAL REVENUE	\$2,000	
	NET COST TO COUNTY	\$8,000	

# DANE COUNTY BUDGET DECISION ITEM REQUEST

<b>1. DEPARTMENT</b> Dane County Henry Vilas Zoo	<b>3. DEPT. NO.</b> 74	<b>5. FUND NAME</b> General Fund	
<b>2. PROGRAM</b> Dane County Henry Vilas Zoo	<b>4. PROGRAM NO.</b> 000/00	<b>6. FUND NO.</b> 1110	
<b>7. DECISION ITEM TITLE</b>			
Laundry POS			
<b>9. DECISION ITEM NUMBER</b>			
ZOO-ZOO-6			
<b>10. SHORT DESCRIPTION (for budget document--may not exceed 470 characters)</b>			
Increased expenditures to reflect the new amount for the current uniform contract for the keeper and maintenance staff. These staff members are provided uniforms for their daily work duties and the uniforms are also laundered and repaired through the contract with Aramark.			
<b>11. (a) EXPLANATION/JUSTIFICATION (please be specific)</b>			
This line item represents the Zoo's increase in current laundry service contract.			
<b>(b) What are the consequences of not funding this request?</b>			
There will not be adequate funding for the laundry POS line item to meet the County's contractual obligation.			
<b>(c) What savings/productivity improvements will result from approval of this request?</b>			
<b>TOTAL REQUESTED FTE CHANGE</b> 0.000			
<b>12. OPERATING EXPENSES / REVENUE SUMMARY</b>			
<b>REQUESTED EXPENDITURES</b>			
PERSONNEL COSTS			\$0
OPERATING EXPENSE			\$0
CONTRACTUAL EXPENSE			\$500
OPERATING OUTLAY			\$0
<b>TOTAL EXPENSE</b>			<b>\$500</b>
<b>RELATED REVENUES</b>			
TAXES			\$0
INTERGOVERNMENTAL REVENUE			\$100
LICENSES & PERMITS			\$0
FINES, FORFEITS & PENALTIES			\$0
PUBLIC CHARGES FOR SERVICE			\$0
INTERGOVERNMENTAL CHARGE FOR SERVICES			\$0
MISCELLANEOUS			\$0
OTHER FINANCING SOURCES			\$0
<b>TOTAL REVENUE</b>			<b>\$100</b>
<b>NET COST TO COUNTY</b>			<b>\$400</b>

# DANE COUNTY BUDGET DECISION ITEM REQUEST

**1. DEPARTMENT** Dane County Henry Vilas Zoo      **3. DEPT. NO.** 74      **5. FUND NAME** General Fund  
**2. PROGRAM** Dane County Henry Vilas Zoo      **4. PROGRAM NO.** 000/00      **6. FUND NO.** 1110

8. BUDGETED POSITION CHANGES			
POSITION#	TITLE	# FTE	START DATE
<b>TOTAL REQUESTED FTE CHANGE</b>		0.000	

**9. DECISION ITEM NUMBER**  
 Elevator Repairs and Maintenance  
 ZOO-ZOO-7

**10. SHORT DESCRIPTION (for budget document--may not exceed 470 characters)**  
 Increased expenditures to reflect the new contract amount for elevator maintenance with Schindler.

**11. (a) EXPLANATION/JUSTIFICATION (please be specific)**  
 This line item represents the Zoo's new elevator service contract increase for service and repair of the four elevators.

**(b) What are the consequences of not funding this request?**  
 There will not be adequate funding for the elevator repair POS line item to meet the County's contractual obligation.

**(c) What savings/productivity improvements will result from approval of this request?**

12. OPERATING EXPENSES / REVENUE SUMMARY	
<b>REQUESTED EXPENDITURES</b>	
PERSONNEL COSTS	\$0
OPERATING EXPENSE	\$0
CONTRACTUAL EXPENSE	\$3,100
OPERATING OUTLAY	\$0
<b>TOTAL EXPENSE</b>	<b>\$3,100</b>
<b>RELATED REVENUES</b>	
TAXES	\$0
INTERGOVERNMENTAL REVENUE	\$620
LICENSES & PERMITS	\$0
FINES, FORFEITS & PENALTIES	\$0
PUBLIC CHARGES FOR SERVICE	\$0
INTERGOVERNMENTAL CHARGE FOR SERVICES	\$0
MISCELLANEOUS	\$0
OTHER FINANCING SOURCES	\$0
<b>TOTAL REVENUE</b>	<b>\$620</b>
<b>NET COST TO COUNTY</b>	<b>\$2,480</b>

**Dane County  
5-Year Budget Projections**

**Department: Dane County Henry Vilas Zoo  
Program: Dane County Henry Vilas Zoo**

Expenditures	2016	2017	2018	2019	2020	2021
	Adopted	Projected	Projected	Projected	Projected	Projected
Personal Services	\$1,873,700	\$1,870,900	\$1,908,100	\$1,945,000	\$1,989,400	\$2,016,300
Operating Expenses	\$785,575	\$819,986	\$845,643	\$872,154	\$899,548	\$927,857
Contractual Services	\$249,225	\$245,897	\$250,602	\$255,393	\$260,272	\$265,241
Operating Capital	\$0	\$0	\$0	\$0	\$0	\$0
<b>Total Expenditures</b>	<b>\$2,908,500</b>	<b>\$2,936,783</b>	<b>\$3,004,345</b>	<b>\$3,072,547</b>	<b>\$3,149,220</b>	<b>\$3,209,398</b>

Revenue	2016	2017	2018	2019	2020	2021
	Adopted	Projected	Projected	Projected	Projected	Projected
Taxes	\$0	\$0	\$0	\$0	\$0	\$0
Intergovernmental Revenue	\$385,272	\$392,977	\$400,837	\$408,854	\$417,031	\$425,372
Licenses & Permits	\$0	\$0	\$0	\$0	\$0	\$0
Fines, Forfeits & Penalties	\$0	\$0	\$0	\$0	\$0	\$0
Public Charges for Services	\$871,000	\$871,000	\$871,000	\$871,000	\$871,000	\$871,000
Intergovernmental Charges for Services	\$0	\$0	\$0	\$0	\$0	\$0
Miscellaneous	\$81,240	\$35,000	\$35,000	\$35,000	\$35,000	\$35,000
Other Financing Sources	\$0	\$0	\$0	\$0	\$0	\$0
<b>Total Revenues</b>	<b>\$1,337,512</b>	<b>\$1,298,977</b>	<b>\$1,306,837</b>	<b>\$1,314,854</b>	<b>\$1,323,031</b>	<b>\$1,331,372</b>

<b>GPR Impact</b>	<b>\$1,570,988</b>	<b>\$1,637,806</b>	<b>\$1,697,508</b>	<b>\$1,757,693</b>	<b>\$1,826,189</b>	<b>\$1,878,026</b>
-------------------	--------------------	--------------------	--------------------	--------------------	--------------------	--------------------

Percentage Change      4.25%      3.65%      3.55%      3.90%      2.84%

20

CAPITAL BUDGET SUMMARY

PROGRAM SUMMARY	2015 ACTUAL	ADOPTED BUDGET 2016	2015 CARRYFORWARD	2016 COUNTY BOARD ACTIONS	CURRENT MODIFIED BUDGET	ACTUAL YTD	ESTIMATED TOTAL	TOTAL ESTIMATED CARRYFORWARD	AGENCY BASE
CAPITAL EXPENDITURES - BORROW	\$1,429,418	\$640,000	\$1,011,950	\$0	\$1,651,950	\$23,388	\$1,651,950	\$0	\$0
CAPITAL EXPENDITURES - LEVY	\$0	\$0	\$0	\$0	\$0	\$0	\$0	\$0	\$0
TOTAL CAPITAL EXPENDITURES:	\$1,429,418	\$640,000	\$1,011,950	\$0	\$1,651,950	\$23,388	\$1,651,950	\$0	\$0
LESS REVENUES									
TAXES	\$0	\$0	\$0	\$0	\$0	\$0	\$0	\$0	\$0
INTERGOVERNMENTAL REVENUE	\$17,178	\$48,000	\$544,065	\$0	\$592,065	\$0	\$592,065	\$0	\$0
LICENSES & PERMITS	\$0	\$0	\$0	\$0	\$0	\$0	\$0	\$0	\$0
FINES, FORFEITS & PENALTIES	\$0	\$0	\$0	\$0	\$0	\$0	\$0	\$0	\$0
PUBLIC CHARGE FOR SERVICE	\$359,432	\$0	\$0	\$0	\$0	\$0	\$0	\$0	\$0
INTERGOV'L CHARGES FOR SERVICE	\$0	\$0	\$0	\$0	\$0	\$0	\$0	\$0	\$0
MISCELLANEOUS	\$176,000	\$592,000	\$400,000	\$0	\$992,000	\$0	\$992,000	\$0	\$0
OTHER FINANCING SOURCES	\$0	\$0	\$0	\$0	\$0	\$0	\$0	\$0	\$0
TOTAL PROGRAM REVENUES	\$552,610	\$640,000	\$944,065	\$0	\$1,584,065	\$0	\$1,584,065	\$0	\$0
NET COST (BORROWING & LEVY):	\$876,808	\$0	\$67,885	\$0	\$67,885	\$23,388	\$67,885	\$0	\$0

PROGRAM SUMMARY	AGENCY BASE	DECISION ITEM #1	DECISION ITEM #2	DECISION ITEM #3	DECISION ITEM #4	DECISION ITEM #5	DECISION ITEM #6	DECISION ITEM #7	AGENCY REQUEST
CAPITAL EXPENDITURES - BORROW	\$0	\$330,000	\$0	\$0	\$0	\$0	\$0	\$0	\$330,000
CAPITAL EXPENDITURES - LEVY	\$0	\$0	\$0	\$0	\$0	\$0	\$0	\$0	\$0
TOTAL CAPITAL EXPENDITURES:	\$0	\$330,000	\$0	\$0	\$0	\$0	\$0	\$0	\$330,000
LESS REVENUES									
TAXES	\$0	\$0	\$0	\$0	\$0	\$0	\$0	\$0	\$0
INTERGOVERNMENTAL REVENUE	\$0	\$66,000	\$0	\$0	\$0	\$0	\$0	\$0	\$66,000
LICENSES & PERMITS	\$0	\$0	\$0	\$0	\$0	\$0	\$0	\$0	\$0
FINES, FORFEITS & PENALTIES	\$0	\$0	\$0	\$0	\$0	\$0	\$0	\$0	\$0
PUBLIC CHARGE FOR SERVICE	\$0	\$0	\$0	\$0	\$0	\$0	\$0	\$0	\$0
INTERGOV'L CHARGES FOR SERVICE	\$0	\$0	\$0	\$0	\$0	\$0	\$0	\$0	\$0
MISCELLANEOUS	\$0	\$0	\$0	\$0	\$0	\$0	\$0	\$0	\$0
OTHER FINANCING SOURCES	\$0	\$0	\$0	\$0	\$0	\$0	\$0	\$0	\$0
TOTAL PROGRAM REVENUES	\$0	\$66,000	\$0	\$0	\$0	\$0	\$0	\$0	\$66,000
NET COST (BORROWING & LEVY):	\$0	\$264,000	\$0	\$0	\$0	\$0	\$0	\$0	\$264,000

21

DEPARTMENT Dane County Henry Vilas Zoo  
PROGRAM: D.C. Henry Vilas Zoo-Capt Proj

YR	ORG CODE	OBJECT	DESCRIPTION	2015 EXPENDITURES	ADOPTED BUDGET 2016	2015 CARRYFORWARD	2016 COUNTY BOARD ACTIONS	CURRENT MODIFIED BUDGET	ACTUAL EXPENDITURES YTD	ESTIMATED EXPENDITURES TOTAL	TOTAL ESTIMATED CARRYFORWARD	AGENCY BASE
C	A	P	D	EXPENDITURES	\$0	\$0	\$50,000	\$50,000	\$0	\$50,000	\$0	\$0
17	CPZ00	57010	ADMIN BLDG EXTERIORS REPLACE	\$0	\$100,000	\$37,550	\$0	\$137,550	\$0	\$137,550	\$0	\$0
17	CPZ00	57012	ADMINISTRATION ROOF REPLACEMENT	\$5,450	\$0	\$7,183	\$0	\$7,183	\$0	\$7,183	\$0	\$0
17	CPZ00	57048	ARCTIC PASSAGE EXHIBIT	\$892,249	\$0	\$403,276	\$0	\$403,276	\$0	\$403,276	\$0	\$0
17	CPZ00	57074	AVIARY ROOF REPLACEMENT	\$0	\$400,000	\$400,000	\$0	\$800,000	\$4,300	\$800,000	\$0	\$0
17	CPZ00	57769	LOWER RESTROOM REPLACEMENT	\$0	\$0	\$70,000	\$0	\$70,000	\$3,800	\$70,000	\$0	\$0
17	CPZ00	58092	PLAYGROUND IMPROVEMENTS	\$0	\$0	\$19,645	\$0	\$19,645	\$0	\$19,645	\$0	\$0
17	CPZ00	59030	ZOO CONCESSION FACILITY	\$451,277	\$100,000	\$24,296	\$0	\$124,296	\$15,288	\$124,296	\$0	\$0
17	CPZ00	59033	ZOO IMPROVEMENTS	\$77,057	\$40,000	\$0	\$0	\$40,000	\$0	\$40,000	\$0	\$0
17	CPZ00	59036	ZOO OPERATING EQUIPMENT	\$3,385	\$0	\$0	\$0	\$0	\$0	\$0	\$0	\$0
17	CPZ00	59291	PRIMATE HVAC	\$0	\$0	\$0	\$0	\$0	\$0	\$0	\$0	\$0
17	CPZ00	59292	RHINO BARN IMPROVEMENTS	\$0	\$0	\$0	\$0	\$0	\$0	\$0	\$0	\$0
17	CPZ00	59293	TIGER VIEWING ROOF REPLACEMENT	\$0	\$0	\$0	\$0	\$0	\$0	\$0	\$0	\$0
			TOTAL EXPENDITURES	\$1,429,418	\$640,000	\$1,011,950	\$0	\$1,651,950	\$23,388	\$1,651,950	\$0	\$0

22

DEPARTMENT Dane County Henry Vilas Zoo  
 PROGRAM: D.C. Henry Vilas Zoo-CapI Proj

YR	ORG CODE	OBJECT	DESCRIPTION	AGENCY BASE	DECISION ITEM #1	DECISION ITEM #2	DECISION ITEM #3	DECISION ITEM #4	DECISION ITEM #5	DECISION ITEM #6	DECISION ITEM #7	AGENCY REQUEST
C	A	P	B	D								
17	CPZ00	57010	ADMIN BLDG EXTERIORS REPLACE	\$0								\$0
17	CPZ00	57012	ADMINISTRATION ROOF REPLACEMENT	\$0								\$0
17	CPZ00	57048	ARCTIC PASSAGE EXHIBIT	\$0								\$0
17	CPZ00	57074	AVIARY ROOF REPLACEMENT	\$0								\$0
17	CPZ00	57769	LOWER RESTROOM REPLACEMENT	\$0								\$0
17	CPZ00	58092	PLAYGROUND IMPROVEMENTS	\$0								\$0
17	CPZ00	59030	ZOO CONCESSION FACILITY	\$0								\$0
17	CPZ00	59033	ZOO IMPROVEMENTS	\$0								\$0
17	CPZ00	59036	ZOO OPERATING EQUIPMENT	\$0	\$100,000							\$100,000
17	CPZ00	59291	PRIMATE HVAC	\$0	\$40,000							\$40,000
17	CPZ00	59292	RHINO BARN IMPROVEMENTS	\$0	\$85,000							\$85,000
17	CPZ00	59293	TIGER VIEWING ROOF REPLACEMENT	\$0	\$75,000							\$75,000
17	CPZ00		TOTAL EXPENDITURES	\$0	\$330,000	\$0	\$0	\$0	\$0	\$0	\$0	\$330,000

23

YR	ORG CODE	OBJECT	DESCRIPTION	2015 REVENUES	ADOPTED BUDGET 2016	2015 CARRYFORWARD	2016 COUNTY BOARD ACTIONS	CURRENT MODIFIED BUDGET	ACTUAL REVENUES YTD	ESTIMATED REVENUES TOTAL	TOTAL ESTIMATED CARRYFORWARD	AGENCY BASE
C	A	P	B	D	C	C	C	C	C	C	C	C
17	CPZ00	84326	ARCTIC PASSAGE-CITY OF MADISON	\$0	\$0	\$450,000	\$0	\$450,000	\$0	\$450,000	\$0	\$0
17	CPZ00	84352	ADMIN BLDG EXTERIOR-CI MADISON	\$0	\$0	\$10,000	\$0	\$10,000	\$0	\$10,000	\$0	\$0
17	CPZ00	84353	PLAYGROUND EQUIP-CI OF MADISON	\$0	\$0	\$14,000	\$0	\$14,000	\$0	\$14,000	\$0	\$0
17	CPZ00	84354	ZOO ADMIN ROOF-CITY OF MADISON	\$1,090	\$20,000	\$7,510	\$0	\$27,510	\$0	\$27,510	\$0	\$0
17	CPZ00	84355	ZOO EQUIPMENT-CITY OF MADISON	\$677	\$8,000	\$0	\$0	\$8,000	\$0	\$8,000	\$0	\$0
17	CPZ00	84361	AVIARY ROOF-CITY OF MADISON	\$0	\$0	\$54,014	\$0	\$54,014	\$0	\$54,014	\$0	\$0
17	CPZ00	84365	ZOO IMPROVEMENTS-CITY MADISON	\$15,411	\$20,000	\$8,541	\$0	\$28,541	\$0	\$28,541	\$0	\$0
17	CPZ00	84372	ARCTIC PASSAGE-ZOOLOGICAL SOC	\$359,432	\$0	\$0	\$0	\$0	\$0	\$0	\$0	\$0
17	CPZ00	84974	BORROWING PROCEEDS	\$176,000	\$592,000	\$400,000	\$0	\$992,000	\$0	\$992,000	\$0	\$0
17	CPZ00	84064	PRIMATE HVAC-CITY OF MADISON	\$0	\$0	\$0	\$0	\$0	\$0	\$0	\$0	\$0
17	CPZ00	84065	RHINO BARN-CITY OF MADISON	\$0	\$0	\$0	\$0	\$0	\$0	\$0	\$0	\$0
17	CPZ00	84066	TIGER VIEWING-CITY OF MADISON	\$0	\$0	\$0	\$0	\$0	\$0	\$0	\$0	\$0
			TOTAL REVENUES	\$552,610	\$640,000	\$944,065	\$0	\$1,584,065	\$0	\$1,584,065	\$0	\$0

24




DEPARTMENT Dane County Henry Vilas Zoo  
 PROGRAM: D.C. Henry Vilas Zoo-Caplt Proj

YR	ORG CODE	OBJECT	DESCRIPTION	AGENCY BASE	DECISION ITEM #1	DECISION ITEM #2	DECISION ITEM #3	DECISION ITEM #4	DECISION ITEM #5	DECISION ITEM #6	DECISION ITEM #7	AGENCY REQUEST
17	CPZ00	84326	ARCTIC PASSAGE-CITY OF MADISON	\$0								\$0
17	CPZ00	84352	ADMIN BLDG EXTERIOR-CI MADISON	\$0								\$0
17	CPZ00	84353	PLAYGROUND EQUIP-CI OF MADISON	\$0								\$0
17	CPZ00	84354	ZOO ADMIN ROOF-CITY OF MADISON	\$0								\$0
17	CPZ00	84355	ZOO EQUIPMENT-CITY OF MADISON	\$0	\$8,000							\$8,000
17	CPZ00	84361	AVIARY ROOF-CITY OF MADISON	\$0	\$20,000							\$20,000
17	CPZ00	84365	ZOO IMPROVEMENTS-CITY MADISON	\$0								\$0
17	CPZ00	84372	ARCTIC PASSAGE-ZOOLOGICAL SOC	\$0								\$0
17	CPZ00	84974	BORROWING PROCEEDS	\$0								\$0
17	CPZ00	84064	PRIMATE HVAC-CITY OF MADISON	\$0	\$17,000							\$17,000
17	CPZ00	84065	RHINO BARN-CITY OF MADISON	\$0	\$15,000							\$15,000
17	CPZ00	84066	TIGER VIEWING-CITY OF MADISON	\$0	\$6,000							\$6,000
			TOTAL REVENUES	\$0	\$66,000	\$0	\$0	\$0	\$0	\$0	\$0	\$66,000

25

# DANE COUNTY CAPITAL PROJECTS/EQUIPMENT DETAIL SHEET

<b>AGENCY</b> Henry Vilas Zoo	<b>ORGANIZATION</b> Zoo Capital Projects	<b>COMPLETED BY</b> Ronda Schwetz	<b>PHONE</b> 266-4708
<b>PROJECT TITLE</b> Zoo Improvement Projects		<b>PROJECT NO.</b> 09-684-02	<b>BEGIN DATE</b> Jan-17
<b>PROJECT/EQUIPMENT DESCRIPTION (INCLUDE USEFUL LIFE FOR EQUIPMENT)</b> Necessary improvements to the zoo's infrastructure to assure continued accreditation by the Association of Zoos and Aquariums. Specific improvements will be completed each year based on priorities.		<b>PROJECT COMPONENTS (if applicable)</b> Zoo Improvements	
		<b>COST</b>	<b>\$ 100,000</b>
<b>PROJECT JUSTIFICATION</b> Continuous improvement needs and major maintenance demands for the zoo have grown as the zoo expands and has aged. These are necessary improvements to the zoo's infrastructure to maintain the health and safety of the animals, staff and visitors; improve the overall efficiency of the zoo; and improve animal habitats and visitor experience.		<b>TOTAL \$ 100,000</b>	
<b>LOCATION</b> Henry Vilas Zoo, 702 S. Randall Avenue, Madison WI			


PROJECT FINANCING SUMMARY	Prior Years	2017	2018	2019	2020	2021	Total
---------------------------	-------------	------	------	------	------	------	-------

PROJECT EXPENDITURES							
PLANNING & DESIGN	\$0						\$0
ARCHITECTURAL SERVICES	\$0						\$0
PROPERTY ACQUISITION / SITE PREPARATION	\$0						\$0
CONSTRUCTION	\$0	\$100,000	\$100,000	\$100,000	\$100,000	\$100,000	\$500,000
INFO TECHNOLOGY / TELECOMMUNICATIONS	\$0						\$0
OFFICE FURNITURE / EQUIPMENT	\$0						\$0
CONTINGENCY	\$0						\$0
CAPITAL EQUIPMENT PURCHASE	\$0						\$0
<b>TOTAL EXPENDITURES</b>	\$0	\$100,000	\$100,000	\$100,000	\$100,000	\$100,000	\$500,000

PROJECT FUNDING							
PROPERTY TAX	\$0						\$0
DEBT	\$0	\$80,000	\$80,000	\$80,000	\$80,000	\$80,000	\$400,000
FEDERAL	\$0						\$0
STATE	\$0						\$0
CITY OF MADISON	\$0	\$20,000	\$20,000	\$20,000	\$20,000	\$20,000	\$100,000
OTHER	\$0						\$0
<b>TOTAL FUNDING</b>	\$0	\$100,000	\$100,000	\$100,000	\$100,000	\$100,000	\$500,000

ESTIMATED ANNUAL OPERATING COSTS	\$0	\$0	\$0	\$0	\$0	\$0	\$0
----------------------------------	-----	-----	-----	-----	-----	-----	-----

# DANE COUNTY CAPITAL PROJECTS/EQUIPMENT DETAIL SHEET

<b>AGENCY</b> Henry Vilas Zoo	<b>ORGANIZATION</b> Zoo Capital Projects	<b>COMPLETED BY</b> Ronda Schwetz	<b>PHONE</b> 266-4708
<b>PROJECT TITLE</b> Zoo Operating Equipment		<b>PROJECT NO.</b> 14-684-02	<b>BEGIN DATE</b> Jan-17
<b>PROJECT/EQUIPMENT DESCRIPTION (INCLUDE USEFUL LIFE FOR EQUIPMENT)</b> The following items are for safety enhancements for staff and guests.  The Zoo currently has two main entrances which over 900,000 visitors used in 2015. No staff members are assigned to watch the gate entrances and there are no turnstiles or cameras at either entrance. A main recommendation for zoo safety from the Madison Police Department was to add security cameras to each gate. (Gate 1 is the main gate and Gate 9 is the Lake Wingra parking lot entrance.)  There is also a need to add an additional digital radio repeater to our system to get coverage inside the Bear building. Having good radio coverage is a necessity as this is a dangerous animal area.		<b>PROJECT COMPONENTS (if applicable)</b> Security Cameras \$ 25,000 Radio System Improvements 15,000	
<b>PROJECT JUSTIFICATION</b> With an increase of over 200,000 visitors in a year from opening Arctic Passage in 2015, safety has become an even greater priority. Visitor and employee safety can be greatly enhanced by following the Madison PD's suggestion of security video cameras on each entrance, and the improvement of our internal radio system.		<b>TOTAL</b> \$ 40,000	
<b>LOCATION</b> Henry Vilas Zoo, 702 S. Randall Avenue, Madison WI			

PROJECT FINANCING SUMMARY	Prior Years	2017	2018	2019	2020	2021	Total
---------------------------	-------------	------	------	------	------	------	-------

PROJECT EXPENDITURES							
PLANNING & DESIGN	\$0						\$0
ARCHITECTURAL SERVICES	\$0						\$0
PROPERTY ACQUISITION / SITE PREPARATION	\$0						\$0
CONSTRUCTION	\$0						\$0
INFO TECHNOLOGY / TELECOMMUNICATIONS	\$0						\$0
OFFICE FURNITURE / EQUIPMENT	\$0						\$0
CONTINGENCY	\$0						\$0
CAPITAL EQUIPMENT PURCHASE	\$95,000	\$40,000					\$135,000
<b>TOTAL EXPENDITURES</b>	\$95,000	\$40,000	\$0	\$0	\$0	\$0	\$135,000

PROJECT FUNDING							
PROPERTY TAX	\$0						\$0
DEBT	\$76,000	\$32,000					\$108,000
FEDERAL							\$0
STATE							\$0
CITY OF MADISON	\$19,000	\$8,000					\$27,000
OTHER	\$0						\$0
<b>TOTAL FUNDING</b>	\$95,000	\$40,000	\$0	\$0	\$0	\$0	\$135,000

ESTIMATED ANNUAL OPERATING COSTS							
		\$0	\$0	\$0	\$0	\$0	\$0

# DANE COUNTY CAPITAL PROJECTS/EQUIPMENT DETAIL SHEET

AGENCY	ORGANIZATION	COMPLETED BY	PHONE
Henry Vilas Zoo	Zoo Capital Projects	Ronda Schwetz	266-4708
PROJECT TITLE		PROJECT NO.	END DATE
Primate Building Public and animal area HVAC		17-684-01	Dec-17
PROJECT/EQUIPMENT DESCRIPTION (INCLUDE USEFUL LIFE FOR EQUIPMENT)		COST	
The air conditioners in both the primate building public space and back animal holding/keeper diet prep space both went out within a week of each other in June 2016. We need two different units, one for the public area and one for the animal area.		Primate Building HVAC \$ 85,000	
PROJECT JUSTIFICATION		TOTAL \$ 85,000	
It is a USDA regulation to have climate controlled spaces appropriate for the animals in the area which, currently, we are not able to achieve without air conditioning. The malfunctioning units were original equipment from when the primate building was built in 1994 and have long outlived their life expectancy.		LOCATION	
		Henry Vilas Zoo, 702 S. Randall Avenue, Madison WI	


PROJECT FINANCING SUMMARY	Prior Years	2017	2018	2019	2020	2021	Total
---------------------------	-------------	------	------	------	------	------	-------

PROJECT EXPENDITURES							
PLANNING & DESIGN	\$0						\$0
ARCHITECTURAL SERVICES	\$0						\$0
PROPERTY ACQUISITION / SITE PREPARATION	\$0						\$0
CONSTRUCTION	\$0						\$0
INFO TECHNOLOGY / TELECOMMUNICATIONS	\$0						\$0
OFFICE FURNITURE / EQUIPMENT	\$0						\$0
CONTINGENCY	\$0						\$0
CAPITAL EQUIPMENT PURCHASE	\$0	\$85,000					\$85,000
<b>TOTAL EXPENDITURES</b>	\$0	\$85,000	\$0	\$0	\$0	\$0	\$85,000

PROJECT FUNDING							
PROPERTY TAX	\$0						\$0
DEBT	\$0	\$68,000					\$68,000
FEDERAL	\$0						\$0
STATE	\$0						\$0
CITY OF MADISON	\$0	\$17,000					\$17,000
OTHER	\$0						\$0
<b>TOTAL FUNDING</b>	\$0	\$85,000	\$0	\$0	\$0	\$0	\$85,000

ESTIMATED ANNUAL OPERATING COSTS							
		\$0	\$0	\$0	\$0	\$0	\$0

# DANE COUNTY CAPITAL PROJECTS/EQUIPMENT DETAIL SHEET

<b>AGENCY</b> Henry Vilas Zoo	<b>ORGANIZATION</b> Henry Vilas Zoo	<b>COMPLETED BY</b> Ronda Schwetz	<b>PHONE</b> 608-266-4708
<b>PROJECT TITLE</b> Rhino Barn Improvements		<b>PROJECT NO.</b> 17-684-02	<b>BEGIN DATE</b> Jan-17
<b>PROJECT/EQUIPMENT DESCRIPTION (INCLUDE USEFUL LIFE FOR EQUIPMENT)</b> The rhino barn has all of its original equipment including the furnace, pipes, roof, etc. from the time it was built in the 1970's. The furnace and associated equipment needs to be upgraded to keep up with the heating needs of the rhino barn.		<b>END DATE</b> Dec-17	
		<b>PROJECT COMPONENTS (if applicable)</b> Rhino Barn Improvements	<b>COST</b> \$ 75,000
<b>PROJECT JUSTIFICATION</b> The rhino barn has all of its original equipment including the furnace, pipes, roof, etc. from the time it was built in the 1970's. The furnace could go out at any time and the pipes need to be inspected to see what condition they are in. Currently a tapir lives in this area and we are able to get a young male rhino so would like to make the repairs before this rhino comes.		<b>TOTAL</b> \$ 75,000	
		<b>LOCATION</b> Henry Vilas Zoo, 702 S. Randall Avenue, Madison WI	
			



PROJECT FINANCING SUMMARY	Prior Years	2017	2018	2019	2020	2021	Total
---------------------------	-------------	------	------	------	------	------	-------


PROJECT EXPENDITURES							
PLANNING & DESIGN	\$0						\$0
ARCHITECTURAL SERVICES	\$0						\$0
PROPERTY ACQUISITION / SITE PREPARATION	\$0						\$0
CONSTRUCTION	\$0	\$75,000					\$75,000
INFO TECHNOLOGY / TELECOMMUNICATIONS	\$0						\$0
OFFICE FURNITURE / EQUIPMENT	\$0						\$0
CONTINGENCY	\$0						\$0
CAPITAL EQUIPMENT PURCHASE	\$0						\$0
<b>TOTAL EXPENDITURES</b>	\$0	\$75,000	\$0	\$0	\$0	\$0	\$75,000

PROJECT FUNDING							
PROPERTY TAX	\$0						\$0
DEBT	\$0	\$60,000					\$60,000
FEDERAL	\$0						\$0
STATE	\$0						\$0
CITY OF MADISON	\$0	\$15,000					\$15,000
OTHER	\$0						\$0
<b>TOTAL FUNDING</b>	\$0	\$75,000	\$0	\$0	\$0	\$0	\$75,000

ESTIMATED ANNUAL OPERATING COSTS	\$0	\$0	\$0	\$0	\$0	\$0	\$0
----------------------------------	-----	-----	-----	-----	-----	-----	-----

33

# DANE COUNTY CAPITAL PROJECTS/EQUIPMENT DETAIL SHEET

<b>AGENCY</b> Henry Vilas Zoo	<b>ORGANIZATION</b> Henry Vilas Zoo	<b>COMPLETED BY</b> Ronda Schwetz	<b>PHONE</b> 608-266-4708
<b>PROJECT TITLE</b> Tiger Viewing Structures		<b>PROJECT NO.</b> 17-684-03	<b>BEGIN DATE</b> Jan-17
<b>PROJECT/EQUIPMENT DESCRIPTION (INCLUDE USEFUL LIFE FOR EQUIPMENT)</b> The current wooden shake shingle viewing structures at the glass of the tiger exhibit are rotten with vegetation growing on them. These are the original viewing structures when the cat/primate building was first built in 1994 and have not been updated since.		<b>PROJECT COMPONENTS (if applicable)</b> Tiger Viewing Structure Roof	
		<b>COST</b> \$ 30,000	<b>END DATE</b> Dec-17
<b>PROJECT JUSTIFICATION</b> These viewing structures are needed to prevent glare on the glass and provide covered viewing for the guests at the tiger and lion glass area of the exhibit. They have rotten shingles and vegetation growing on top of them as well. They are the original structures built in 1994 and need to be replaced with new structures for safety.		<b>TOTAL</b> \$ 30,000	
<b>LOCATION</b> Henry Vilas Zoo, 702 S. Randall Avenue, Madison WI			

PROJECT FINANCING SUMMARY	Prior Years	2017	2018	2019	2020	2021	Total
---------------------------	-------------	------	------	------	------	------	-------

PROJECT EXPENDITURES							
PLANNING & DESIGN	\$0						\$0
ARCHITECTURAL SERVICES	\$0						\$0
PROPERTY ACQUISITION / SITE PREPARATION	\$0						\$0
CONSTRUCTION	\$0	\$30,000					\$30,000
INFO TECHNOLOGY / TELECOMMUNICATIONS	\$0						\$0
OFFICE FURNITURE / EQUIPMENT	\$0						\$0
CONTINGENCY	\$0						\$0
CAPITAL EQUIPMENT PURCHASE	\$0						\$0
<b>TOTAL EXPENDITURES</b>	\$0	\$30,000	\$0	\$0	\$0	\$0	\$30,000

PROJECT FUNDING							
PROPERTY TAX	\$0						\$0
DEBT	\$0	\$24,000					\$24,000
FEDERAL	\$0						\$0
STATE	\$0						\$0
CITY OF MADISON	\$0	\$6,000					\$6,000
OTHER	\$0						\$0
<b>TOTAL FUNDING</b>	\$0	\$30,000	\$0	\$0	\$0	\$0	\$30,000

ESTIMATED ANNUAL OPERATING COSTS							
	\$0	\$0	\$0	\$0	\$0	\$0	\$0

35

**Budget Carryforward Request**

Dept: Henry Vilas Zoo  
 Program: Henry Vilas Zoo

**Expenditures**

Budget as Modified Estimated Carryforward

**Revenues**

Budget as Modified Estimated Carryforward

Org Code	Object Code	Revenue Source	Account Description	Budget as Modified	Estimated Carryforward	Type	Resolution Number	Justification/Comments
CPZ00	57010	84352	Admin Bldg exteriors replace			Multi-Year Project		Incomplete Capital Project
CPZ00	57012	84354	Admin Roof Replacement			Multi-Year Project		Incomplete Capital Project
CPZ00	57048	84326	Arctic Passage			Multi-Year Project		Incomplete Capital Project
		84372	Arctic Passage			Multi-Year Project		Incomplete Capital Project
		84324	Arctic Passage			Multi-Year Project		Incomplete Capital Project
CPZ00	57074	84361	Aviary Roof Replacement			Multi-Year Project		Incomplete Capital Project
CPZ00	57769	84364	Lower Restroom Replacement			Multi-Year Project		Incomplete Capital Project
CPZ00	58092	84353	Playground Improvements			Multi-Year Project		Incomplete Capital Project
CPZ00	59030		Zoo Concession Facility			Multi-Year Project		Incomplete Capital Project
CPZ00	59033	84365	Zoo Improvements			Multi-Year Project		Incomplete Capital Project
CPZ00	59036	84355	Zoo Operating Equipment			Multi-Year Project		Equipment still to be purchased
CPZ00		84974	Borrowing Proceeds			Multi-Year Project		Projects have not started yet

30